

CRY2623M Fixed Acoustic Imager

Introduction

CRY2623M Fixed Acoustic Imager uses microphone array beamforming technology to obtain sound source distribution data, and cooperates with high-definition cameras to capture video images in realtime.

CRY2623M can help users realize remote monitoring based on local network (LAN, WIFI, etc.), wide area network (WAN, ADSL, 4G and private network, etc.), and help users realize industrial digital transformation, and support remote real-time monitoring of video images. As such, this provides facilities with further insight into product quality or safety issues, as well as the ability to rapidly detect them.

Features

- Gas Leak Monitoring for Critical Assets
- PD Monitoring & PD Type Recognition
- IP66 Rating
- Real-time Fault Alarm triggering
- Powerful Web-based Software Platform

Highlights

- **24/7 Real-Time Monitoring**

CRY2623M offers continuous, round-the-clock real-time monitoring, which is essential for industries that require constant surveillance of acoustic data and anomalies, such as manufacturing plants, energy facilities, and critical infrastructure.
- **Gas/Vacuum Leak Detection**

CRY2623M excels in gas leak detection, offering pinpoint accuracy in locating leaks. By leveraging advanced acoustic technology, it detects the ultrasound emitted by escaping gases, accurately identifying the precise source of the leak.
- **PD Localization & PD Type Recognition**

Providing advanced capabilities for partial discharge (PD) localization and type recognition, the CRY2623M is essential for evaluating the integrity of electrical insulation in high-voltage equipment.
- **Integration With Robotic Dogs & Wheeled Robots**

Integrating the CRY2623M with robotic dogs and wheeled robots significantly amplifies monitoring and surveillance capabilities across diverse environments.
- **Powerful, Web-based Software Platform**

The web-based software platform is engineered to offer robust monitoring and analysis capabilities, facilitating efficient data management and insightful diagnostics. It enables continuous data collection, secure storage, and real-time analysis of acoustic signals.
- **IP66 Rating**

CRY2623M's IP66 rating guarantees its superior dust and water resistance, making it ideal for harsh industrial environments. This rating guarantees that the device withstands both fine dust and powerful water jets.

Technical Specifications

Acoustic Specification

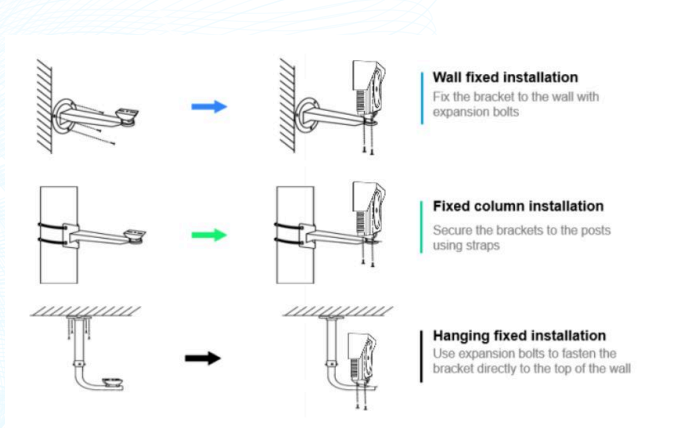
Microphone Array	128 channels MEMS microphone
Frequency Range	2 kHz - 48 kHz
Dynamic Range	0.5 dB - 12 dB user adjustable
Test Sound Pressure Level Range	28 - 120 dBA
Test Distance	0.5 - 50 m (1.64 - 164.04 feet)

Minimum Leakage

Distance to Sound Source (m)	Leakage CCM /CFM
0.5 - 2	28 / 0.00099
2 - 4	46 / 0.00162
4 - 6	47 / 0.00166
6 - 8	50 / 0.00177
8 - 10	53 / 0.00187
10 - 12	66 / 0.00233
12 - 14	70 / 0.00247
14 - 16	78 / 0.00275
16 - 18	90 / 0.00318
18 - 20	97 / 0.00343

Mounting Method

Mounted via two bottom holes; supports wall and clamp mounting.



Camera

FOV	62°
Focal Length	3.04 mm (0.120 inches)
Camera Pixels	8M pixels

General Specifications

Size	183 × 169 × 85 mm (7.20 × 6.65 × 3.35 inches)
Weight	1.6 kg (3.53 lbs)
IP Rating	IP66
Storage	8G internal, 64G microSD card expansion
Operating Environment	-20°C to +60°C (-4°F to +140°F), 10% to 95% no cond.
Power Consumption	14W
Fixed Way	Bottom 1/4 -20 UNC thread/M5 screw fixing
Port	RJ45

Software

Development Protocol	RESTful, websocket, RPC
Streaming Protocol	RTSP, RTMP, webrtc
Language	Chinese, English

Platform

Platform: Web-based platform, VMS software platform

