

smart
induction
heating

SURETHERM 5X

The SURETHERM 5X is a powerful and intelligent induction heater, designed for fast, tension-free heating of bearings, gearwheels, and other precision components. Engineered to meet the highest industrial standards, the 5X delivers consistent results while protecting the integrity of your parts.

The SURETHERM 5X is the entry-level model in TM Induction Heating's professional SURETHERM series — built to deliver high-quality, controlled heating for bearings, gearwheels, and other ring-shaped components. Though compact, the 5X meets the same engineering standards as the rest of the SURETHERM range, ensuring reliable, tension-free heating for parts up to 55 lbs.

Key functions include dual-sensor operation and ramp mode, allowing precise thermal control to protect metallurgical structure. The unit features an industrial touchscreen interface for easy setup,

real-time monitoring, and heating graph display. All data can be exported via USB, and firmware updates are supported throughout the product's life cycle.

Designed for production and maintenance environments, the SURETHERM 5X offers consistent performance with minimal operator effort. It combines the predictability and durability expected from TM Induction Heating systems. This makes the SURETHERM 5X a practical and efficient choice where high performance and repeatability are required in a compact footprint.

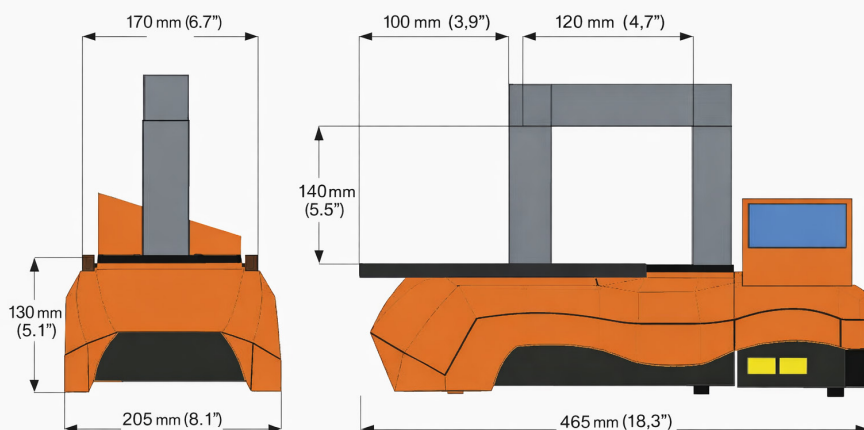


ELECTRICITY	Power rating	2.3 kVA
	Voltage	110-230V
	Current max.	10A
	Frequency	50-60 Hz

WORKPIECE MAX. WEIGHT	Bearings and other parts	25kg	55.12 lb
-----------------------	--------------------------	------	----------

WORKPIECE DIMENSIONS	Min. bore Vertical	ø15 mm	ø0.59 in
	Min. bore Horizontal	66 mm	2.60 in
	Max. Outer diameter	300 mm	11.81 in
	Max. Workpiece width	140 mm	5.51 in

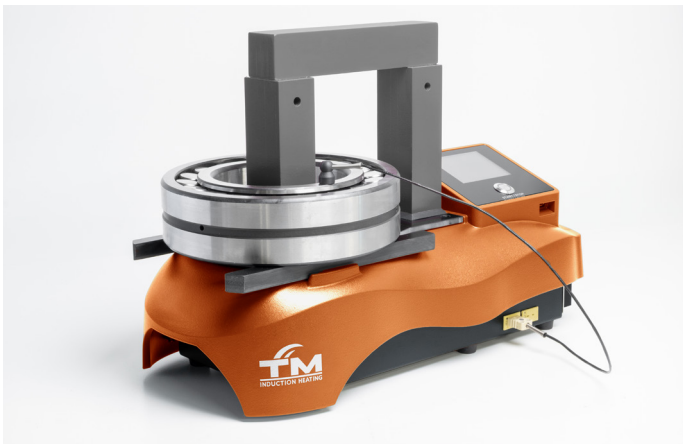
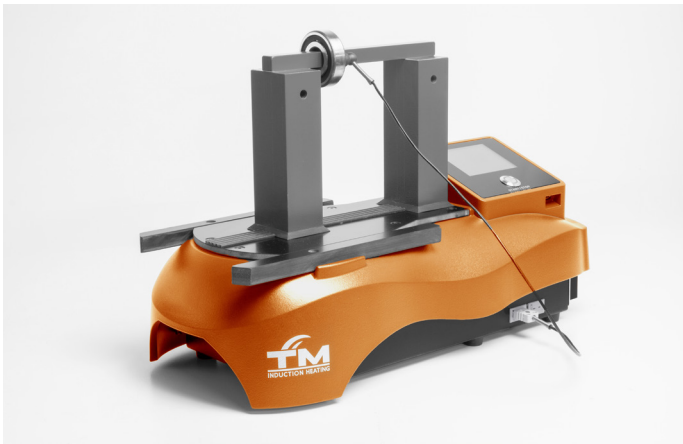
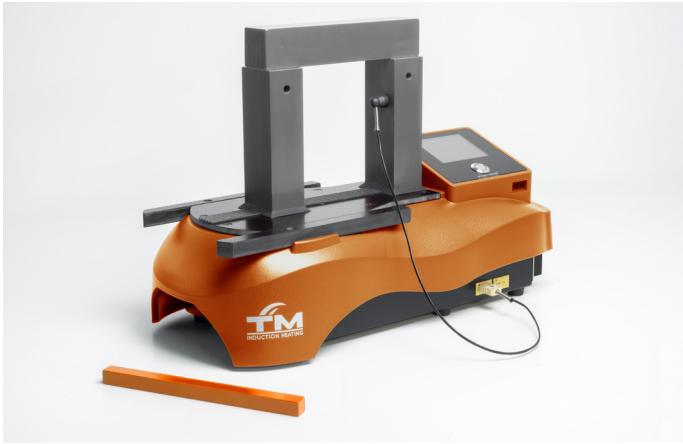
DIMENSIONS IN MM



SURETHERM 5X

WEIGHT	12.5 KG / 27.56 lb (without yokes)			
CONTROLS (for tension free heating)	Temperature (1 sensor)	0-240°C (custom: 0-400°C) 32-464°F (custom 32-752°F)		
	Temperature (2 sensor)	0-240°C 32-464°F	ΔT 20-50°C ΔT 68-122°F	
	Time	0-99 min		
	Time / Temperature Ramp	5-99 min / 5-240°C (41-464°F)		
TOUCHSCREEN		Heating Temperature (1 sensor)	Set- and actual temperature, time and power	
		Heating time	Set- and actual time	
		Heating Time / temp ramp	Set- and actual temperature, time and power	
		Languages	English, German, Spanish, French	
		Error report	Shown in display	
		Heating Temperature (2 sensor)	Set- and actual temperature, time and power. Actual temperature difference between inside and outside diameter	
OTHERS	Heating graph	Shown in display		
	External interface	USB 2.0 Port		
	Sound signal	Buzzer		
	Temperature hold	Yes		
	Demagnetizing	< 2A/cm	< 5.08 A/in	
	Magnetic probe	One piece (standard package)		
	Thermal safety guard coil	Yes		
STANDARD YOKE	Dimensions mm (and inches)	Min. bore mm (and inches)		
	40x38x200	1.57x1.50x7.87 in	ϕ 55	ϕ 2.17 in
	14x14x200	0.55x0.55x7.87 in	ϕ 20	ϕ 0.79 in
AVAILABLE YOKES (optional)	Dimensions mm (and inches)	Min. bore mm (and inches)		
	10x10x200	0.39x0.39x7.87 in	ϕ 15	ϕ 0.59 in
	25x24x200	0.98x0.94x7.87 in	ϕ 35	ϕ 1.38 in
	30x26x200	1.18x1.02x7.87 in	ϕ 40	ϕ 1.57 in
	Set adapter yokes	40x50x75 mm 1.57x1.97x2.95 in		
WARRANTY	Max. 36 Months (24+12)			

SURETHERM 5X



**HEATING
DONE
RIGHT.**



ISO 9001:2015
ID 9000001589
www.tuv.com



LUDECA
Keep it running.

LUDECA Inc.
305-591-8935
Info@ludeca.com
www.ludeca.com