

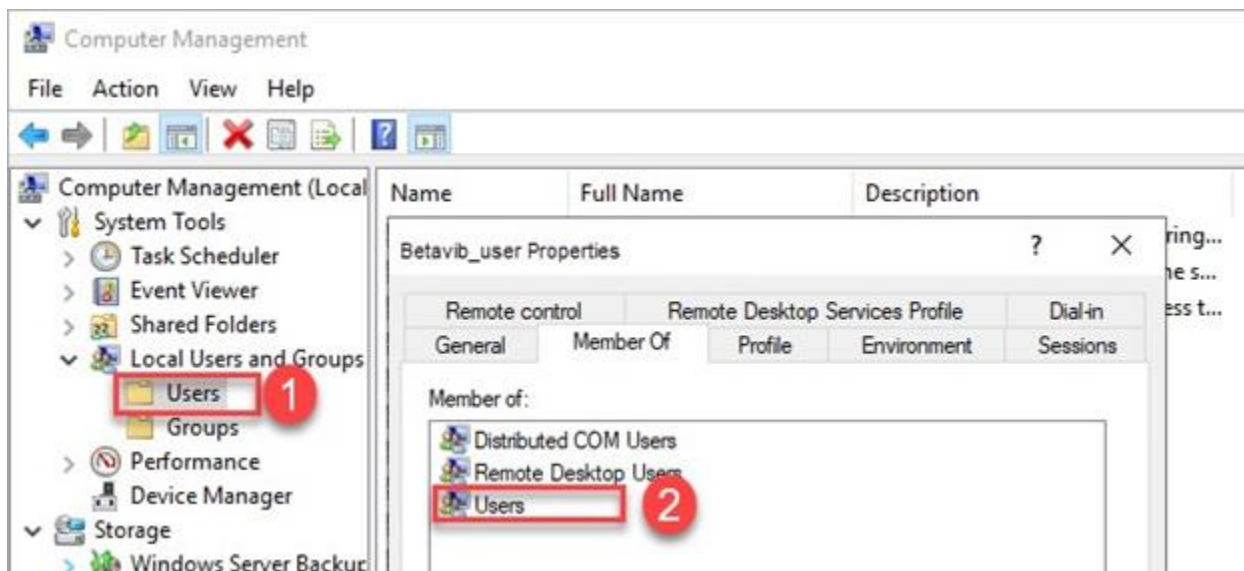
SERVER REQUIREMENT V1.3

1. A windows login account is needed on the domain (if using domains) to login the server.

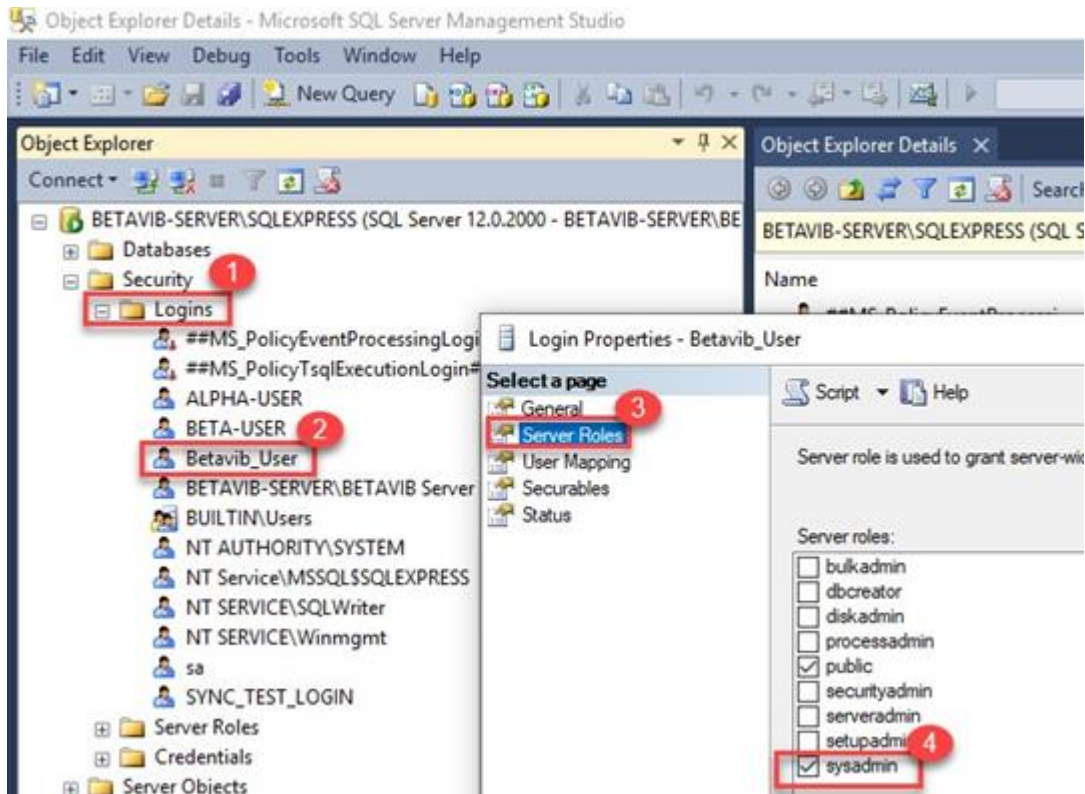
Ex. Betavib_User

2. **SQL SERVER 2019** needs to be installed on the database server with SSMS (SQL Server Management Studio). A separate SQL instance is required.

3. The Windows account can be a normal user. If possible, it is suggested that the (login) user have *System admin permission* on Windows on the server.



4. The SQL (login) user is recommended to have System admin or DB Owner permission on SQL Management Studio on the server. If not, then the (login) user must have the Read-Write-Execute permission on each database.

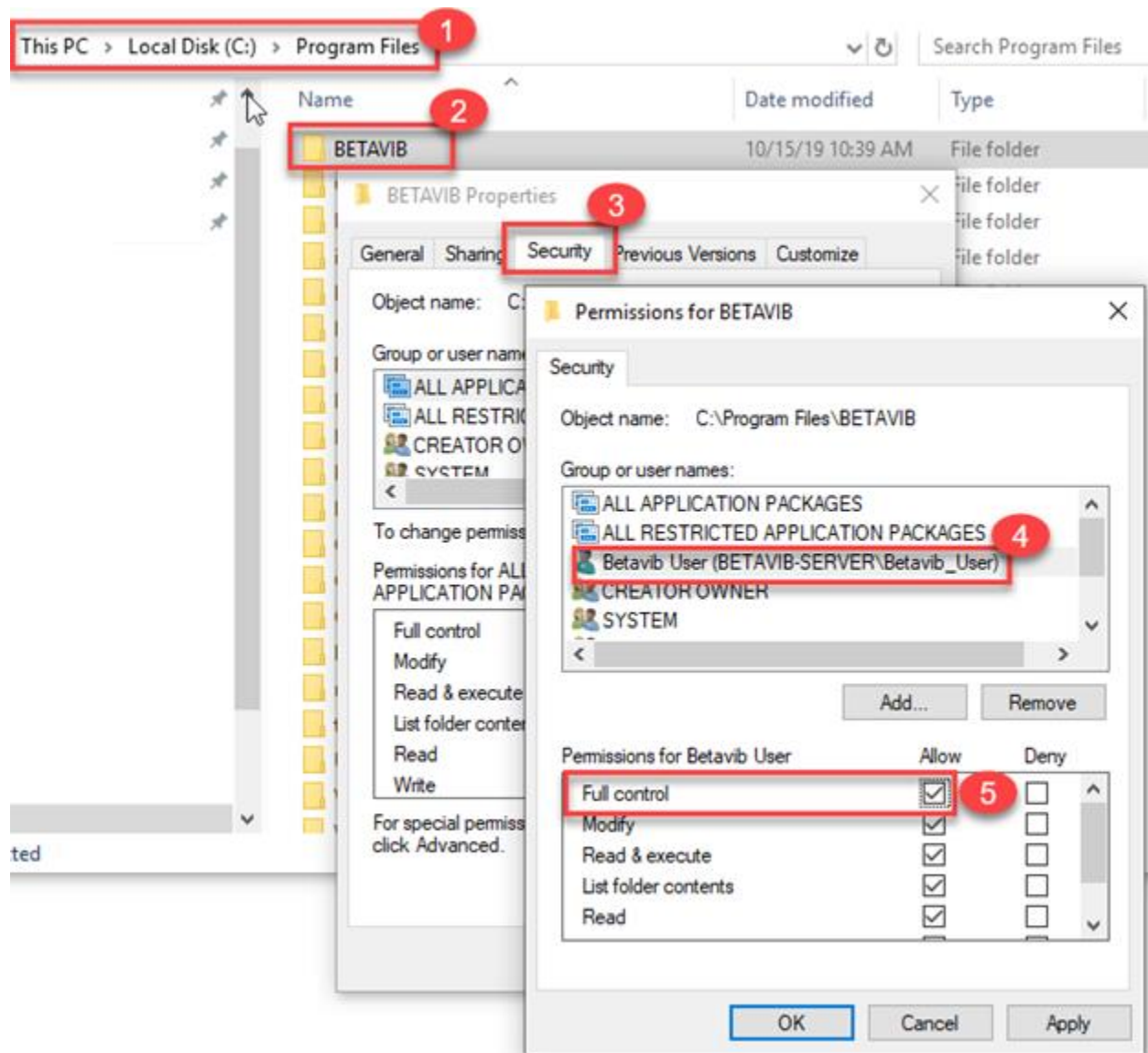


5. All collectors/tablets and server need to be on the same network and be able to ping each other.

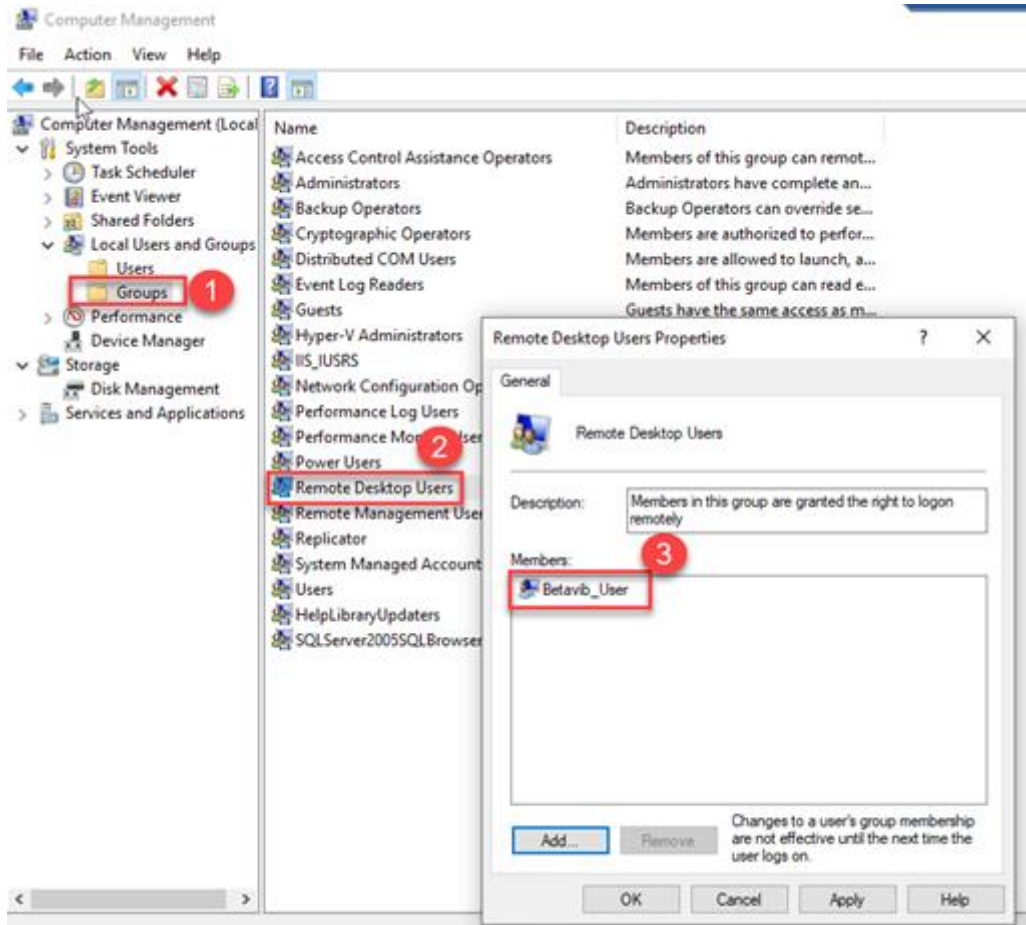
If the collectors/tablets are not physically on the same network using a LAN, a VPN platform needs to be deployed to allow the units (server & tablets) to share data, ping each other, and access respective SQL instances.



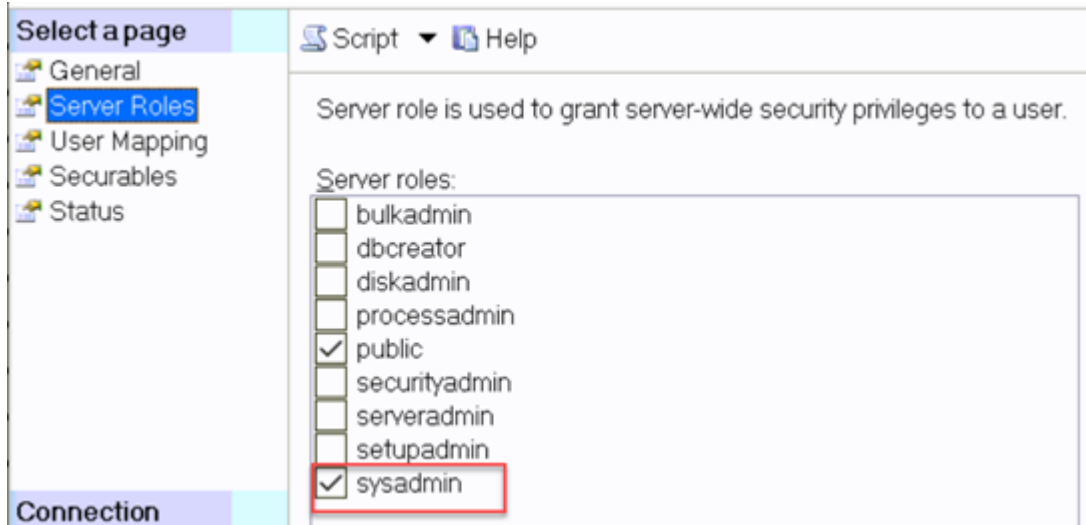
6. Please verify that the Windows user created in step one has full permission on the folder “C:\Program Files\Betavib” on the server.



7. The Windows user needs to have proper rights to access the server via “Remote Desktop Connection (RDP).



8. An additional a SQL user “synchro” needs to be created with full access permission in SQL Management Studio for the sync process. The password associated with the synchro user needs to be communicated with BETAVIB.



9. For the Sync application the below ports are needed:

- **SQL Server Port 1433**

Additionally, files are being transferred using the Sync application. The below ports are needed for the file transfer.

- UDP-137
- UDP-138
- TCP-139
- TCP-445

10. **Minimum Server Specification**

- Processor Intel Core i3-4350 (cache 4 Mo, 3,6 GHz)
- Windows Server 2019
- SQL Server 2019
- 32 GB RAM
- 1 TB HDD
- Gigabit Ethernet